



Element 13 Round Fluted IPAL0912F-TCTB Painted Aluminum™

Martin Richards Design
COLLECTION

Shaft

Outer Diameter 12" (20.32cm)
Inside Diameter 10-1/2" (26.6cm)

Capital Width & Depth

15-1/8" x 15-1/8" (28.5cm)
Capital Height 2-3/4" (6.985cm)

Base Width & Depth (B1)

15-1/8" x 15-1/8" (28.5cm)
Base Height 2-3/4" (6.985cm)

Weight 58lb (26.3 kg)

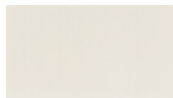
Load Bearing to 30,000lbs (13.6m tons)

Load must be distributed evenly over the shaft

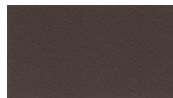
Do not attach railings to shaft without interior substrate

Optional Split for Post Wrap

Standard Powder Coated Finish: Linen: a white matt



OPTIONAL FINISHES



Slate



White Glossy



Black Matt



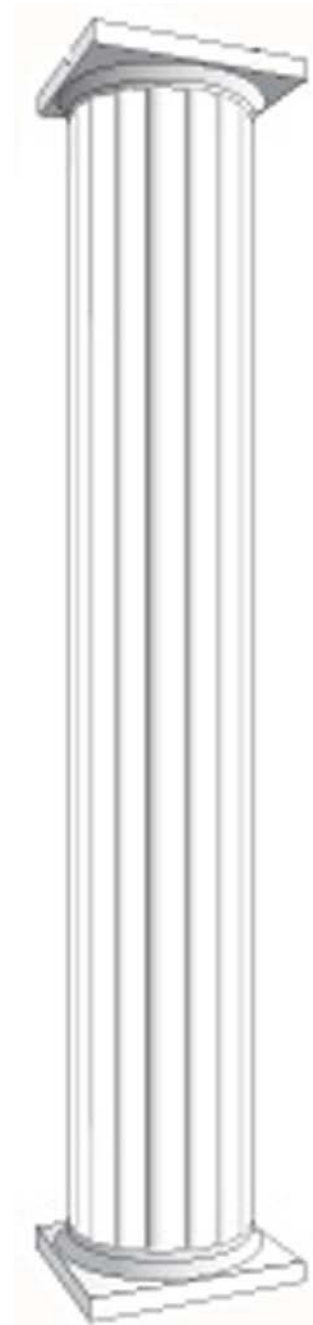
Brown Matt



Beige



Taupe



<=

Total
Height

9 Feet
(108")

2.743 meters

<=

* assembly required, drawing not to scale, Powder Coated Colors may vary from this brochure

* For Load Bearing Application, check with your structural engineer for suitability in your local area
All load limits are based on center load application

* All specifications subject to change without notice, Final products & Measurements may vary from this brochure



Imperial Productions®

1-800-399-7585

Imperial Productions & Distribution Inc Toronto / New York

email sales@imperialproductions.com copyright 2016 MRDCI All Rights Reserved