



# Element 13 Round Fluted

Martin Richards Design.  
COLLECTION

## IPAL2015F-TCTB Painted Aluminum™

### Shaft

Outer Diameter 15" (38.1cm)

Inside Diameter 13-1/2" (34.2cm)

### Capital Width & Depth

18-3/4" x 18-3/4" (47.6cm)

Capital Height (C2) 4-3/4" (12cm)

### Base Width & Depth

18-3/4" x 18-3/4" (47.6cm)

Base Height 4-3/4" (12cm)

Weight 155lb (70.3 kg)

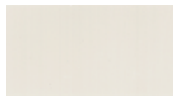
Load Bearing to 33,000lbs (14.96m tons)

Load must be distributed evenly over the shaft

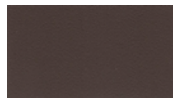
Do not attach railings to shaft without interior substrate

Optional Split for Post Wrap

Standard Powder Coated Finish: Linen: a white matt



### OPTIONAL FINISHES



Slate



White Glossy



Black Matt



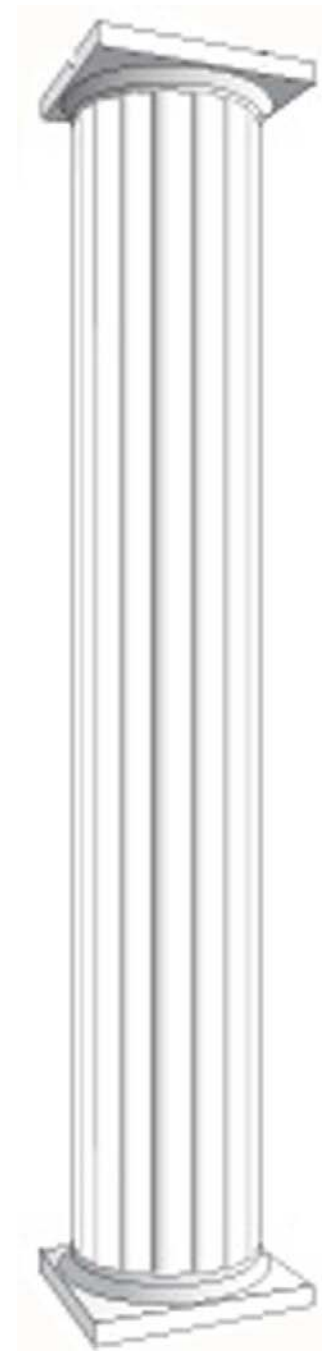
Brown Matt



Beige



Taupe



<=

Total  
Height

20 Feet  
6.096 meters

<=

\* assembly required, drawing not to scale, Powder Coated Colors may vary from this brochure

\* For Load Bearing Application, check with your structural engineer for suitability in your local area  
All load limits are based on center load application

\* All specifications subject to change without notice, Final products & Measurements may vary from this brochure



Imperial Productions®

1-800-399-7585

Imperial Productions & Distribution Inc Toronto / New York

email sales@imperialproductions.com copyright 2016 MRDCI All Rights Reserved