



# Element 13 Round Fluted IPAL2424F-TCTB Painted Aluminum™

Martin Richards Design  
COLLECTION

## Shaft

Outer Diameter 24" (60.96cm)  
Inside Diameter 22-1/2" (57.1cm)

## Capital Width & Depth

28-7/8" x 28-7/8" (73.3cm)  
Capital Height 7-3/4" (19.68cm)

## Base Width & Depth

28-7/8" x 28-7/8" (73.3cm)  
Base Height 7-3/4" (19.68cm)

Weight 370lb (167 kg)

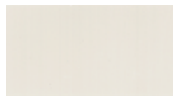
Load Bearing to 43,000lbs (19.5m tons)

Load must be distributed evenly over the shaft

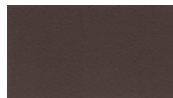
Do not attach railings to shaft without interior substrate

Optional Split for Post Wrap

Standard Powder Coated Finish: Linen: a white matt



## OPTIONAL FINISHES



Slate



White Glossy



Black Matt



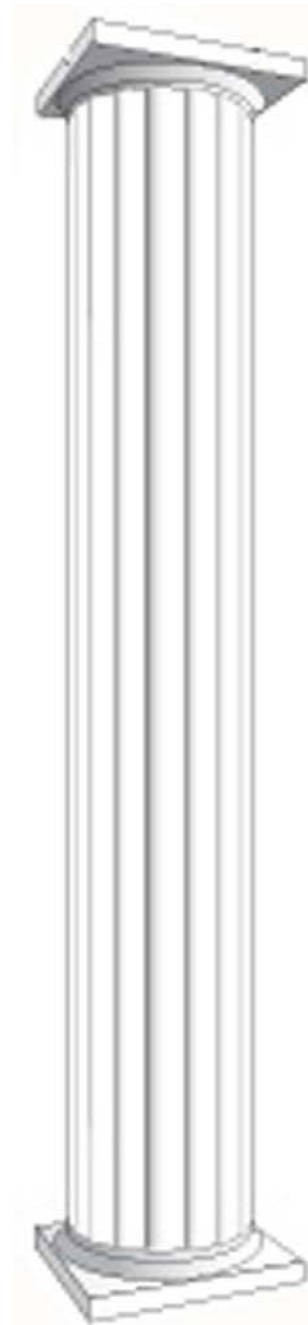
Brown Matt



Beige



Taupe



<=

Total  
Height

24 Feet  
7.315 meters

<=

\* assembly required, drawing not to scale, Powder Coated Colors may vary from this brochure

\* For Load Bearing Application, check with your structural engineer for suitability in your local area  
All load limits are based on center load application

\* All specifications subject to change without notice, Final products & Measurements may vary from this brochure



Imperial Productions®

1-800-399-7585

Imperial Productions & Distribution Inc Toronto / New York

email sales@imperialproductions.com copyright 2016 MRDCI All Rights Reserved