



Element 13 Fluted Square

Martin Richards Design
COLLECTION

IPTSQ0803F-AL Painted Aluminum™

Shaft (A)

3" x 3" (8.89 x 8.89cm)

Capital Width & Depth (C1)

call

Capital Height (C2) call

Base Width & Depth (B1)

call

Base Height (C2) call

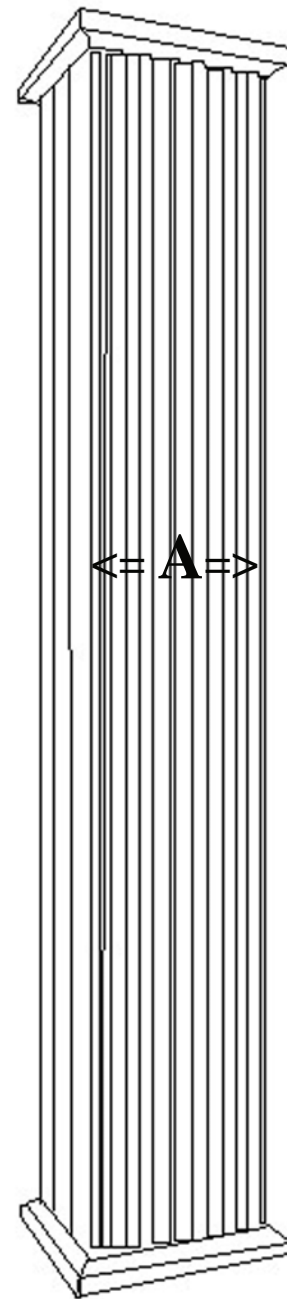
Weight 8 lb (3.6 kg)

Load Bearing to 8,000lbs (3.62m tons)

Load must be distributed evenly over the shaft

Do not attach railings to shaft without interior substrate

<= C1 =>



<=

Total
Height

8 Feet
(96")

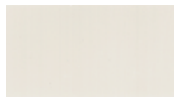
2.43 meters

<= A =>

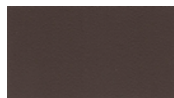
<=

<= B1 =>

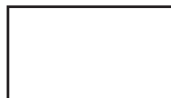
Standard Powder Coated Finish: Linen: a white matt



OPTIONAL FINISHES



Slate



White Glossy



Black Matt



Brown Matt



Beige



Taupe

* assembly required, drawing not to scale, Powder Coated Colors may vary from this brochure

* For Load Bearing Application, check with your structural engineer for suitability in your local area

* All specifications subject to change without notice, Final products & Measurements may vary from this brochure



Imperial Productions®

1-800-399-7585

Imperial Productions & Distribution Inc Toronto / New York

email sales@imperialproductions.com copyright 2016 MRDCI All Rights Reserved

Nov 2018