



# Element 13 Fluted Square

Martin Richards Design™

COLLECTION

## IPTSQ0903F-AL Painted Aluminum™

Shaft (A)

3" x 3" (8.89 x 8.89cm)

Capital Width & Depth (C1)

call

Capital Height (C2) call

Base Width & Depth (B1)

call

Base Height (C2) call

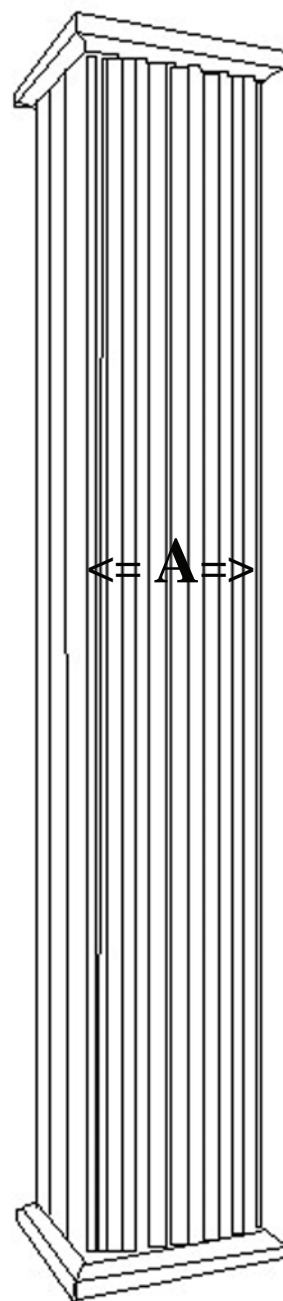
Weight 9 lb (4 kg)

Load Bearing to 8,000lbs (3.62m tons)

Load must be distributed evenly over the shaft

Do not attach railings to shaft without interior substrate

<= C1 =>



<=

Total  
Height

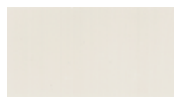
9 Feet  
2.74 meters

<= A =>

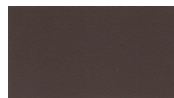
<=

<= B1 =>

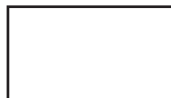
Standard Powder Coated Finish: Linen: a white matt



### OPTIONAL FINISHES



Slate



White Glossy



Black Matt



Brown Matt



Beige



Taupe

\* assembly required, drawing not to scale, Powder Coated Colors may vary from this brochure

\* For Load Bearing Application, check with your structural engineer for suitability in your local area

\* All specifications subject to change without notice, Final products & Measurements may vary from this brochure



Imperial Productions®

1-800-399-7585

Imperial Productions & Distribution Inc Toronto / New York

email sales@imperialproductions.com copyright 2016 MRDCI All Rights Reserved

Nov 2018