



# Element 13 Fluted Square

Martin Richards Design.  
COLLECTION

## IPTSQ0908F-AL Painted Aluminum™

### Shaft (A)

7-1/2" x 7-1/2" (19 x 19cm)

### Capital Width & Depth (C1)

10-1/2" x 10-1/2" (26.6 x 26.6cm)

### Capital Height (C2) 2" (5cm)

### Base Width & Depth (B1)

10-1/2" x 10-1/2" (26.6 x 26.6cm)

### Base Height (B2) 2" (5cm)

### Weight 29 lb (13.14 kg)

Load Bearing to 24,000lbs (10.8m tons)

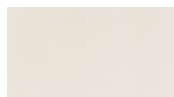
Load must be distributed evenly over the shaft

Do not attach railings to shaft without interior substrate

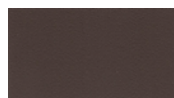
### Optional Split for Post Wrap

Inside Space: 6-1/2" x 6-1/2" (16.5cm x 16.5cm)

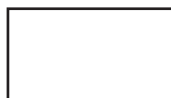
Standard Powder Coated Finish: Linen: a white matt



### OPTIONAL FINISHES



Slate



White Glossy



Black Matt



Brown Matt

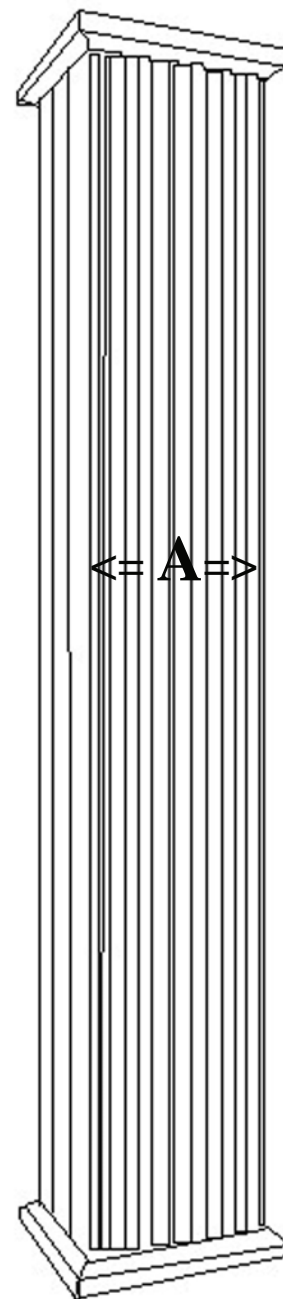


Beige



Taupe

<= C1 =>



<=

Total  
Height

9 Feet  
2.74 meters

<= A =>

<=

<= B1 =>

\* assembly required, drawing not to scale, Powder Coated Colors may vary from this brochure

\* For Load Bearing Application, check with your structural engineer for suitability in your local area

\* All specifications subject to change without notice, Final products & Measurements may vary from this brochure



Imperial Productions®

1-800-399-7585

Imperial Productions & Distribution Inc Toronto / New York

email sales@imperialproductions.com copyright 2016 MRDCI All Rights Reserved

Nov 2018