



# Element 13 Fluted Square

Martin Richards Design™

COLLECTION

## IPTSQ0910F-AL Painted Aluminum™

Shaft (A)

10" x 10" (25.4 x 25.4cm)

Capital Width & Depth (C1)

12-7/8" x 12-7/8" (32.7 x 32.7cm)

Capital Height (C2) 2-11/16" (6.8 x 6.8cm)

Base Width & Depth (B1)

12-7/8" x 12-7/8" (32.7 x 32.7cm)

Base Height (C2) 2-11/16" (6.8 x 6.8cm)

Weight 46 lb (20.8 kg)

Load Bearing to 26,000lbs (11.79 tons)

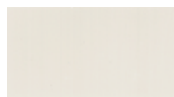
Load must be distributed evenly over the shaft

Do not attach railings to shaft without interior substrate

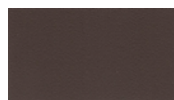
Optional Split for Post Wrap

Inside Space: 8-1/2" x 8-1/2" (21.5cm x 21.5cm)

Standard Powder Coated Finish: Linen: a white matt



### OPTIONAL FINISHES



Slate



White Glossy



Black Matt



Brown Matt

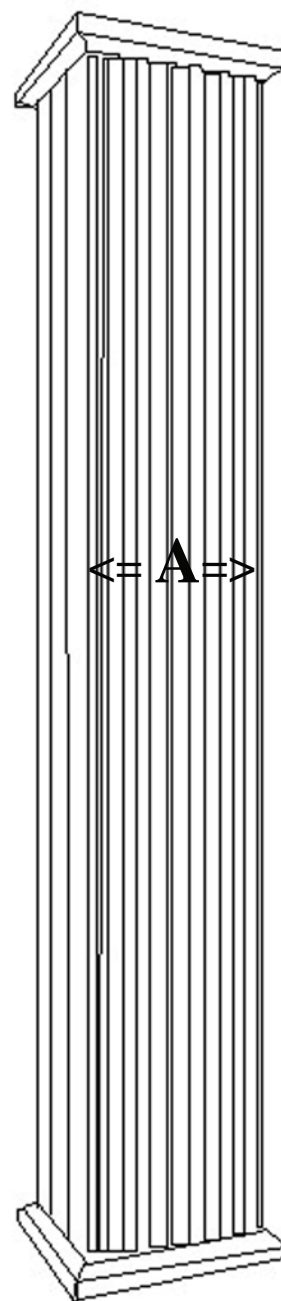


Beige



Taupe

<= C1 =>



<=

Total  
Height

9 Feet

2.74 meters

<= A =>

<=

<= B1 =>

\* assembly required, drawing not to scale, Powder Coated Colors may vary from this brochure

\* For Load Bearing Application, check with your structural engineer for suitability in your local area

\* All specifications subject to change without notice, Final products & Measurements may vary from this brochure



Imperial Productions®

1-800-399-7585

Imperial Productions & Distribution Inc Toronto / New York

email sales@imperialproductions.com copyright 2016 MRDCI All Rights Reserved

Nov 2018