



Scamozzi Capital IPSCA107 ArchPolymer™



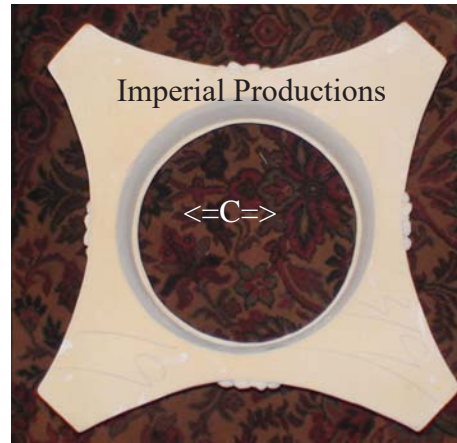
Imperial Productions

Diagonal
32-1/2"
82.5cm

C = Hole
14-1/4"
36.1cm

E) Center
Height
7"
17.8cm
----->

<-----23" (58.4cm)----->



< -----
23"
58.4cm

< -----



< -----
10"
25.4cm

< -----

<----- Width of Scrolls ----->
23" (58.4cm)

Materials:

- i) ArchPolymer™
a synthetic wood Primed White
- ii) GRG-NeoPlaster



Imperial Productions



Imperial Productions

* All specifications subject to change without notice,
Final products & Measurements may vary from this brochure Manufacturing tolerences +/- 1/8" (.31cm)



Imperial Productions®

1-800-399-7585

Imperial Productions & Distribution Inc Toronto / New York

SEP-21

email sales@imperialproductions.com copyright 2016 MRDCI All Rights Reserved



Imperial Productions® Request for Quote

Download, Fill-in & Email to sales@imperialproductions.com

Name / Company: _____

Phone _____ Email _____

Billing Address: _____

City: _____ Prov / State _____

PC / Zip Code _____

Ship to Address: _____

City: _____ Prov / State _____

PC / Zip Code _____

Product Code: _____

Quantity: _____

Notes: _____



Imperial Productions®

1-800-399-7585

Imperial Productions & Distribution Inc Toronto / New York

email sales@imperialproductions.com copyright 2016 MRDCI All Rights Reserved