



Fluted Tuscan Custom Sizes Limitations and Procedures

How to measure the Shaft Size

Shaft Height: Measure the total height including the capital and base, then provide the sub-measurements of the capital, shaft and base alone

Diameter or Circumference: For the top and bottom of shaft, provide the diameters or circumferences.

To measure the circumference take a string and wrap it around the shaft at the top then the bottom.

The length of the string for both measurements is the circumference.

Taper: Specify the Entasis ie where the taper turns straight lower 1/3rd of the shaft

Hardwood - Full Customization

All parts of the Hardwood Tuscan Column can be customized.

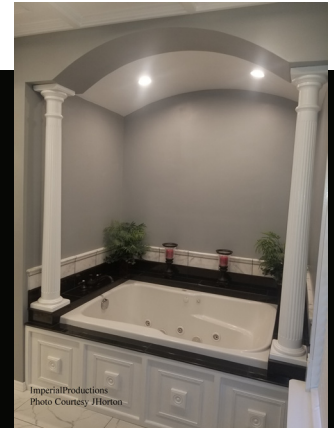
Specify

Height: Total height including capital and base

Capital height (2 parts) Base Height Torus and Plinth

Diameter of the top and bottom of the shaft and taper

For example the photo to the right has no square on the capital



Composites

All Made from molds and there is limited customization

PolyComp™:

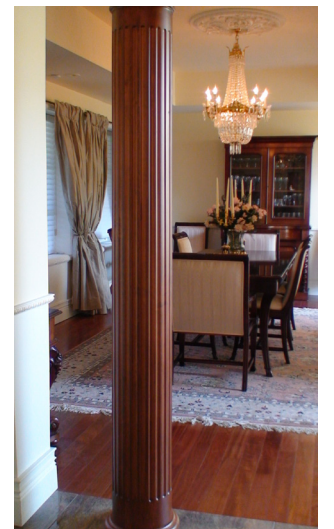
Specify whole or split shafts to wrap a load bearing post or split for pilaster application. Specify painted or unfinished.

FiberComp™ or Fiberglass

Specify whole or split for pilaster or to wrap a load bearing post.

Specify wedged or inside or outside corner cuts. Specify the total height.

Specify flute termination and flat portion under the flutes.



Procedures:

- 1) Take photos of your project and submit them with your filled out custom form with measurements
- 2) For your approval, a quote will be sent to you with your custom form as reviewed by us and a payment form
Custom quotes are paid by bank transfer, Money order, check, Visa or MCard
- 3) Once paid the manufacturing process begins reserving line position and material allocation.
There is no cancelation at this time.
- 4) Shop drawing(s) will be provided for approval before assembly begins. To keep within timelines we ask that drawings be returned signed within 24 hours.
- 5) Changes to the shop drawing can be made however additional charges may apply, since the quote is based on the custom form as supplied. Any changes will impact the timeline.



Imperial Productions®

1-800-399-7585

Imperial Productions & Distribution Inc Toronto / New York

email sales@imperialproductions.com copyright 2016 MRDCI All Rights Reserved



Tuscan Fluted Hardwood



Tapered

<= (D)
Top Shaft

<= (J)
Flutes
Start

<= (H)
Taper Ends

<= (G)
Flutes End

<= (i)
End Shaft

Non-Tapered



Flutes are
Concave
Specify
12 or 24
Flutes

Total Height of all Parts: _____

D) Top of Shaft Diameter: _____

Bottom of Shaft Diameter: _____

Taper: The entasis creates a visual distortion for perspective. The taper starts at the top of the shaft under the astragal 2/3rds down the shaft (H) bottom 1/3 straight

Flutes enter distance

J) Flutes Start from Astragal _____

G) Flutes End to Shaft Bottom _____



Staves
1-1/2" (3.8cm)

Optional Load Bearing Solid Core
Solid wood load bearing wood core available. Check with your structural engineer for requirements

Interior Paint Grade Basswood, Poplar
Stain Grade Alder, Ash, Beech, Birch, Cherry, Maple, Mahogany (African) Red Oak, SapMaple (very white), Walnut, White Oak, White Pine
Exterior Stain & Paint Grade:
Douglas Fir, Knotty Pine, White Pine, Clear Pine, Western Red Cedar, Mahogany (African), White Oak

Tuscan Capital - 2 Parts

- (A) Square Abacus =>
- (A1) Cove =>
- (B) Round Ovolo =>
- (C) Top Ring =>
- (D) Neck (D) =>
- (E) Astragal =>



A = Square Cap Width _____ Depth _____

Height _____ A1) Cove Yes / No

B = Round Ovolo Diameter _____ Height _____

C = Top Ring Diameter _____
same as bottom of shaft

D = Top Shaft (Neck) Diameter _____

E = Astragal yes / no (same as bottom of shaft)

Tuscan Base - 2 Parts



- (i) Bottom Shaft =>
- (G) Flutes End =>
- (J) Round Torus =>
- (K1) Cove Yes/No
- (K) Square Plinth =>



i = Bottom of Shaft Diameter _____

J = Base Round Torus Height _____ Diameter _____

K = Square Plinth K1 = Cove Yes or No

Height _____ Width _____ Depth _____

General Details

Interior Exterior

Whole: Qty _____ Split for Pilaster/Engaged Qty: _____

Wrap: 4x4 6x6 i-Beam other: _____ Qty: _____



Engaged



Outside
Corner



Wall
Wrap



Inside
Corner



Imperial Productions & Distribution Inc.

1-800-399-7585 Email: sales@imperialproductions.com

copyright 2019 MartinRichardsDesign&Contracting Inc. All Rights Reserved



Imperial Productions® Request for Quote

Download, Fill-in & Email to sales@imperialproductions.com

Name / Company: _____

Phone _____ Email _____

Billing Address: _____

City: _____ Prov / State _____

PC / Zip Code _____

Ship to Address: _____

City: _____ Prov / State _____

PC / Zip Code _____

Product Code: _____

Quantity: _____

Notes: _____



Imperial Productions®

1-800-399-7585

Imperial Productions & Distribution Inc Toronto / New York

email sales@imperialproductions.com copyright 2016 MRDCI All Rights Reserved