

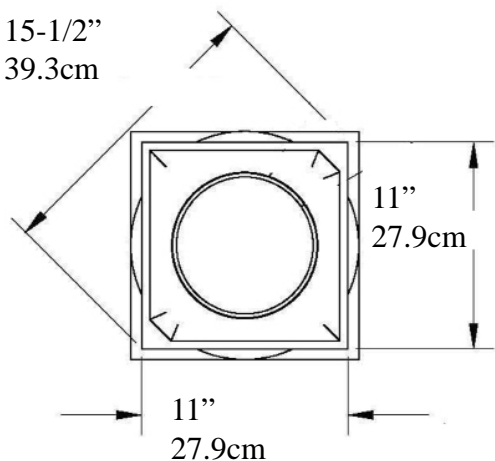


Tuscan Tapered Column

IPTUS0910S-TCTB FiberComp™

Tuscan Capital EconPolymert™

15-1/2"
39.3cm



Cap 3" (7.62cm)=>

Top of Shaft
Inside Diameter
6-1/4" (15.8cm)

Outside Diameter
7-1/2" (19cm)

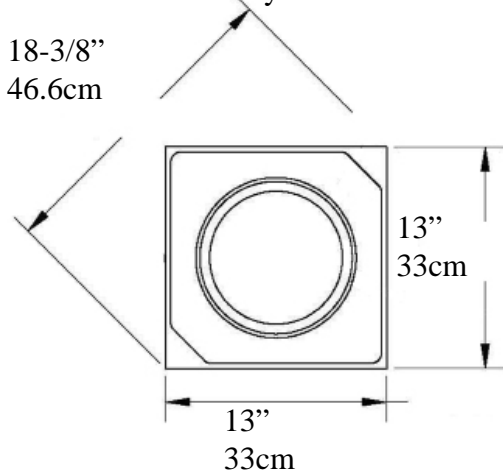
<=

Total
Height

9 Feet
2.74 metre

Tuscan Base EconPolymert™

18-3/8"
46.6cm



Bottom of Column
Outside Diameter
9-5/8"
24.4cm

Taper Ends
from Bottom
36"
91.44cm

Optional Cuts

A

B

C

D



A= Half column

B = 3/4 Outside Corner

C = Wall Cover Engaged

D = 1/4 Column Inside Corner

E = Engaged any percentage

Base & Plinth
5" (12.7cm)

=>

=>

<=

Weight Shaft 84 lbs (38 Kg)

Load Bearing o/c to 14,000lbs (6.35m tons)

* *assembly required, drawing not to scale*

* *For Load Application check with your structural engineer for suitability in your local area*

* All specifications subject to change without notice, Final products & Measurements may vary from this brochure



Imperial Productions®

1-800-399-7585

Imperial Productions & Distribution Inc Toronto / New York

email sales@imperialproductions.com copyright 2016 MRDCI All Rights Reserved

JUL-21



Imperial Productions® Request for Quote

Download, Fill-in & Email to sales@imperialproductions.com

Name / Company: _____

Phone _____ Email _____

Billing Address: _____

City: _____ Prov / State _____

PC / Zip Code _____

Ship to Address: _____

City: _____ Prov / State _____

PC / Zip Code _____

Product Code: _____

Quantity: _____

Notes: _____



Imperial Productions®

1-800-399-7585

Imperial Productions & Distribution Inc Toronto / New York

email sales@imperialproductions.com copyright 2016 MRDCI All Rights Reserved