

# Historic Column & Spindle Duplication



## WOOD RESTORATION

### Step 1: Take 3 Digital Photos

Photo 1) Long shot of column

Measure the total height with all parts

Photo 2) Close up of Capital

Measure the square width, depth, height

Measure the round circumference of each

round section, measure between the rings

Photo 3) Close up of Base

Measure square base, width depth height

Circumference of each round part & height

### Step 2: Things we need to know

How many columns?

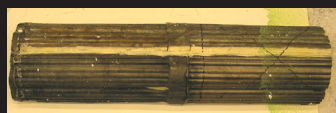
Inside or outside use

Will they wrap a load bearing post

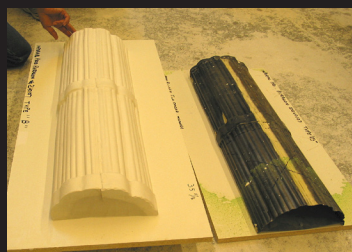
What size is the post?

We will do a Written Quote for your approval

# Historic Architectural Element Duplication



<=Broken  
Moldings



<=New  
Plug



Any architectural element can be reproduced from a plug and made in quantity in FRP / ArchPolymer™ / Wood / Plaster / StoneMold

### Step 1: Plug

We can produce a plug from a drawing or have one made from a sample you provide

### Step 2: Mold

A mold is manufactured so that new pieces can be produced in quantity

### Step 3: Reproductions

Each mold allows multiples of the original



<=Restored  
Longer Piece

From Digital photos we can provide a written quote for your approval



[www.imperialproduction.com](http://www.imperialproduction.com)

Imperial Productions & Distribution Inc. sales@imperialproduction.com  
1-800-399-7585, Fax 888-244-1083 copyright 2007 All Rights Reserved

see Page A1 for Terms & Conditions

**Chapter I Columns**  
**Page 1-10 Fall-2010**