

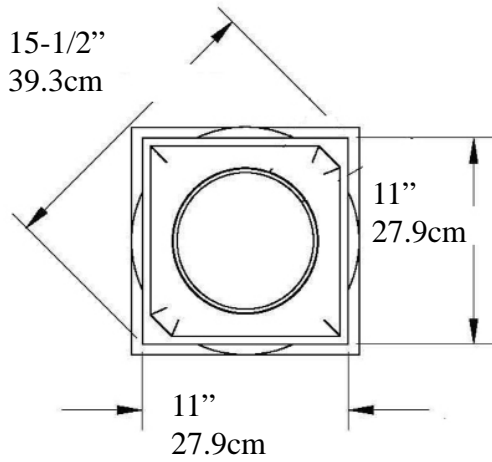


Tuscan Column

IPTUS0610S-TCTB

FRP-PolyComp™

Tuscan Capital EconPolymertm



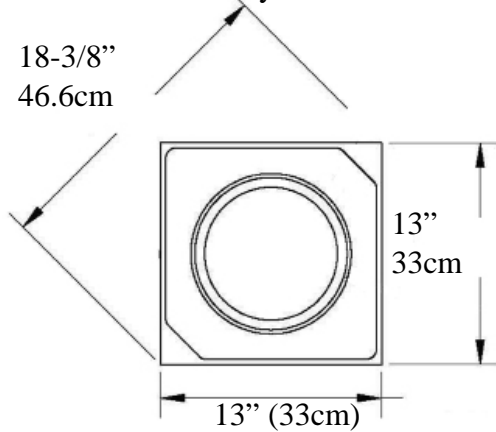
Cap 3" (7.62cm) =>

Top of Shaft to Top of Astragal 6-1/2" (16.5cm) =>

Top of Shaft Minimum Inside Diameter 6-1/4" (15.8cm)

Outside Diameter 7-1/2" (19cm)

Tuscan Base EconPolymertm



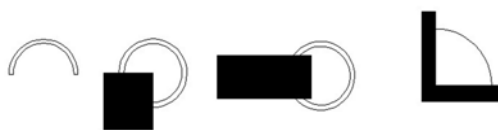
Bottom of Column Outside Diameter 9-5/8" 24.4cm

Taper Ends from Bottom 32" 81.28cm



Optional Cuts

A B C D



- A= Half column
- B = 3/4 Outside Corner
- C = Wall Cover Engaged
- D = 1/4 Column Inside Corner
- E = Engaged any percentage

Base & Plinth => 4-13/16" (12.2cm)

Weight Shaft 72 lb (32.6 Kg)
Center Loads to 14,000lbs (6.35m tons)

* assembly required, drawing not to scale

* For Load Application check with your structural engineer for suitability in your local area

* All specifications subject to change without notice, Final products & Measurements may vary from this brochure



Imperial Productions®

1-800-399-7585

Imperial Productions & Distribution Inc

email sales@imperialproductions.com copyright 2016 MRDCI All Rights Reserved



REQUEST FOR COLUMN QUOTE

Download and Auto Fill

Name / Company _____

Contact Name: _____

Phone # _____ Email: _____

Bill To Address

ShipTo Address

ZIP/PC _____

ZIP/PC _____

Product Code _____

- 1) Residential
- 2) Commercial
- 3) Commercial Load Bay

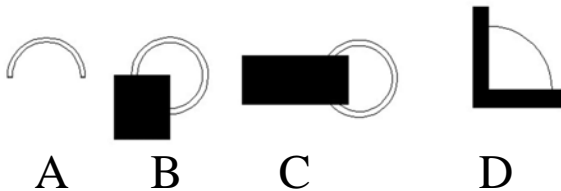
of Columns Whole _____

Fill in _____

Split for Wrap (A) _____

Notes: _____

Split for Engaged (A) _____



Split B _____

Split C _____

Split D _____

Date: _____



Imperial Productions®

1-800-399-7585

Imperial Productions & Distribution Inc.

email sales@imperialproductions.com copyright 2016 MRDCI All Rights Reserved